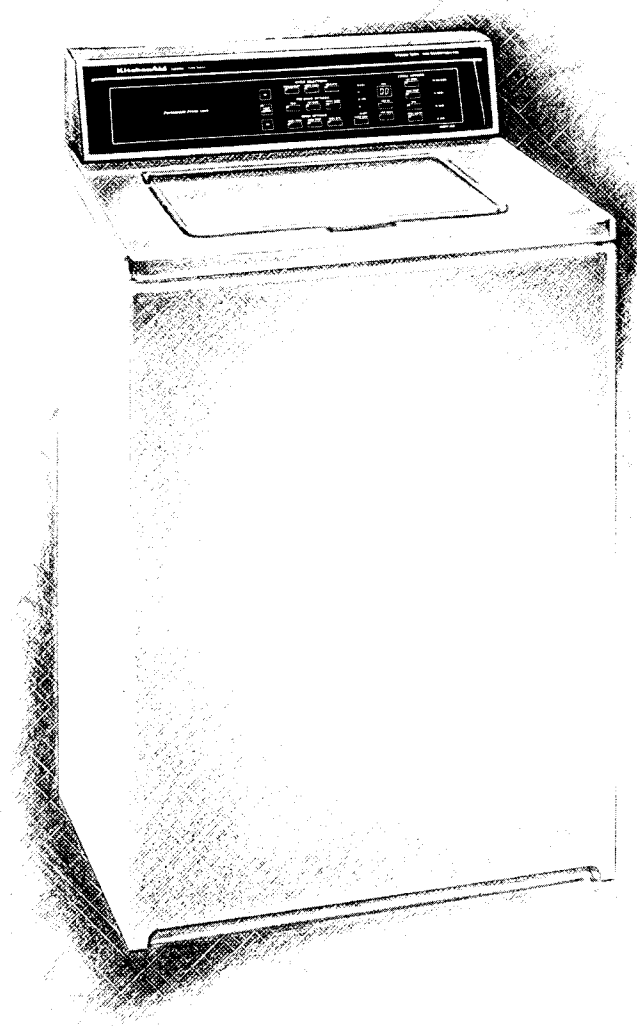


KitchenAidTM

Extra Capacity Clothes Washer

MODEL KAWE950V



USE and CARE GUIDE

Table of Contents

Important Safety Instructions	3
You Are Responsible For	4
Ownership Registration	4
Clothes Washer Features	5
Operating the Clothes Washer	6
Water Hardness	6
Water Temperature	7
Energy Saving Tips	8
Load Preparation	8
Sorting	9
Loading	9-11
Add Soap or Detergent	9
Tips on Detergent Use	10
Add Sorted Wash Load	10
Loading Tips	10
Load Sizes and Water Levels	11
Loading Suggestions	11
Make Selections	12-18
Touch On	12
Select a Pre-Wash Option	12
Select a Cycle Selection	12
Select a Water Level	12
To Change Wash or Rinse Temperatures ..	13
To Change the Wash Time	13
To Restart the Washer	13
Regular/Heavy Cycle	14
Permanent Press Cycle	14
Delicates Cycle	15
Options	15
Soak Option	15
Pre-Wash Option	16
Extra Wash Option	16
Warm Rinse Option	17
Extra Rinse Option	17
Rinse Spin Option	17
Spin Option	18
Cycle Sentry Option	18
Other Instructions	18
Use of Clothes Washer Dispensers	19
Liquid Bleach Dispenser	19
Fabric Softener Dispenser	19
Caring for the Clothes Washer	20
Common Washing Problems and Causes ...	21
Laundry Aids	22-23
Stain Removal Tips	24-26
Caring for Special Items	27-30
For Service or Assistance	31
Warranty	BACK COVER

© 1989 KitchenAid Inc.

Important Safety Instructions

To reduce the risk of fire, electric shock, or injury to persons when using the washer, follow basic precautions, including the following:

1. Read all instructions carefully for important information before using your appliance.
2. Your washer should be installed in an area protected from weather.
3. Your washer should be connected to the right kind of outlet, electrical supply and grounding. See the Installation Instructions for complete information.
4. Never wash articles in the washer that have been spotted, cleaned, washed or soaked in gasoline, wax, paint, or other flammable fluids. The fumes can create a fire hazard or explosion. Never add these materials to your washer, and never use them near your washer. Always hand launder and air dry fabrics treated with flammable fluids.
5. Never allow children to play on or in the washer. Close supervision is necessary when this or any appliance is used near children.
6. Before your washer is removed for service or discarded, always remove the lid to prevent accidental entrapment.
7. Do not tamper with controls.
8. Do not reach into the washer if the agitator is moving or the basket is spinning. If the lid is opened while the basket is spinning, the basket will automatically stop in a few seconds.
9. If the hot water system has not been used for a period of 2 weeks or more, hydrogen gas may build up in water heater and hot water pipes. Hydrogen gas is explosive. If the hot water system has not been used for such a time period, turn on all hot water faucets and let the water flow from each for several minutes before using the washing machine. This will allow gases to escape. Do not smoke or use an open flame during this procedure.
10. Do not install or perform any servicing unless you are qualified. Improper installation, repair, or servicing may result in personal injury or fire hazard.

SAVE THESE INSTRUCTIONS

You Are Responsible For

YOU ARE RESPONSIBLE FOR MAKING SURE THAT YOUR WASHER:

- Is installed by a qualified installer.
- Is properly maintained.
- Is properly installed and leveled on a floor that can support the weight.*
- Is located in an area where the temperature will not fall below freezing.
- Is properly connected to the right water supply and drain.*
- Is used only for its intended function.
- Is not run where there may be explosive fumes.
- Is not used by children or anyone unable to operate it properly.

ALWAYS unplug the power supply cord or turn off electrical power before attempting to service the washer.

DO NOT machine wash glass fiber materials. Small particles can stick to fabrics washed in subsequent loads and cause skin irritation.

ALWAYS read and follow instructions on packages of detergent and laundry aids – especially warnings and precautions.

*See the Installation Instructions for complete information.

Ownership Registration

Please fill out and mail your Ownership Registration Card packed with the Use and Care Guide. This card will enable us to contact you in the unlikely event of a product safety notification and assist us in complying with the provisions of the Consumer Product Safety Act. Return of this card is not necessary to validate your warranty.

You must provide proof of purchase or installation date for in-warranty service.

Write down the following information. You will need it if your washer ever requires service.

Model Number* _____

Serial Number* _____

Date Purchased _____

Date Installed _____

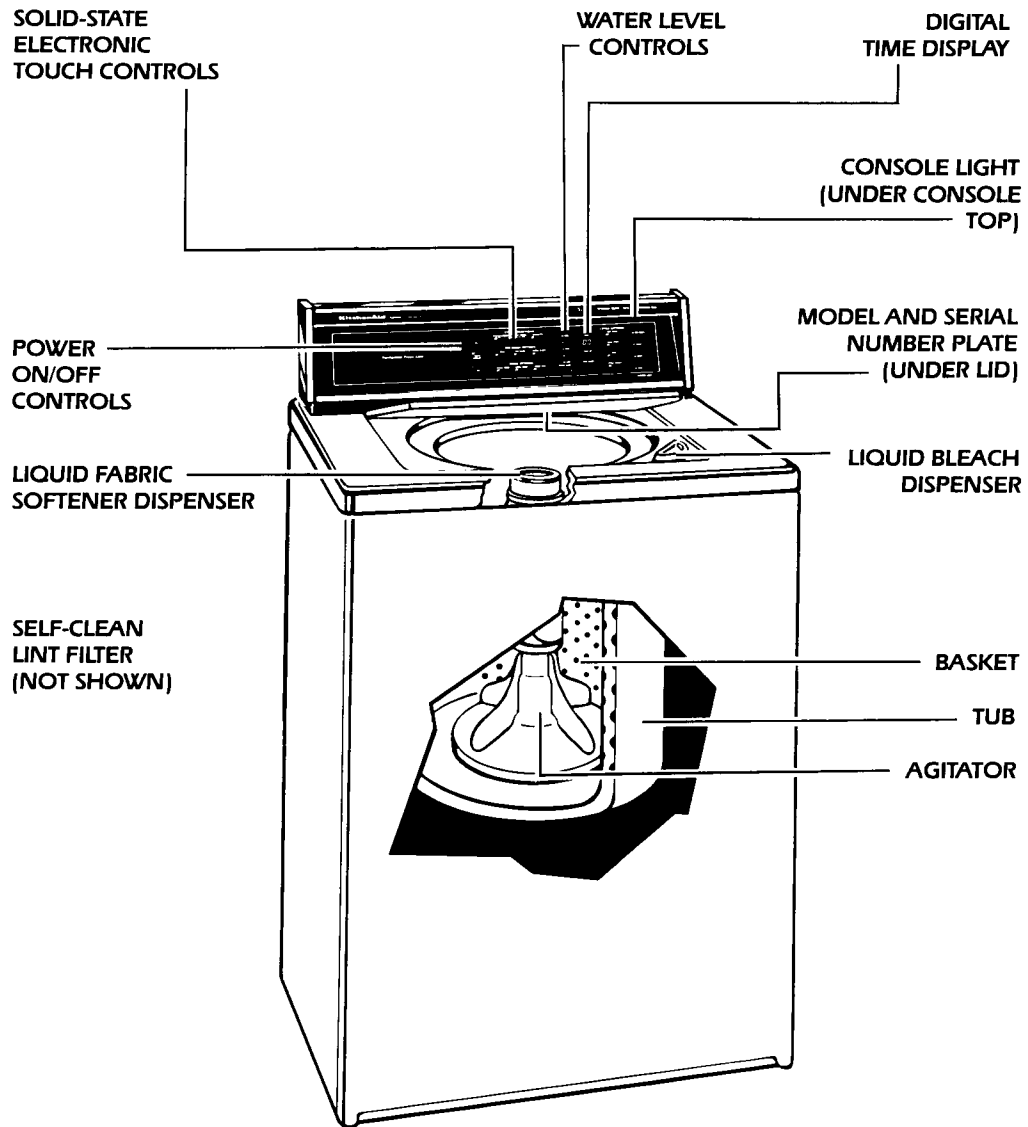
Dealer's Name _____

Address _____

Phone _____

*Model and serial numbers are located on a label underneath the lid, near the hinge.

Clothes Washer Features



Operating the Clothes Washer

Step 1 Add measured detergent. See page 10 for information on detergent use.

Step 2 Add sorted load. See page 9 for sorting information.

Step 3 Start the washer by touching ON pad. See page 12.

Step 4 Make selections:

- A) Select a PRE-WASH Option, if desired.
- B) Select a wash cycle.
- C) Select a water level.
- D) Change water temperatures, if desired.

Step 5 Close washer lid. The washer will not drain or spin if the lid is left open.

Water Hardness

Many complaints of poor washing results can be traced to wash water temperature and hardness.

Water Hardness

Water with a high mineral content is called hard water. Water deposits and stains in the wash tub are examples of problems caused by hard water.

To check water hardness:

- City water – ask the water company. They can tell you the mineral content in grains per gallon or parts per million.
- Well water – check with your Cooperative Extension Service Office.

If your water is hard:

- Consider installing a water softener.
- Consider installing an iron filter if the iron content is high.
- Use more detergent (see table on page 9 for recommended amounts).
- Do not use soap, use detergent.
- Soften wash and rinse water with a packaged non-precipitating water conditioner.

SOFT WATER:

0 to 4 grains per gallon, or 0 to 68 parts per million

MEDIUM HARD WATER:

5 to 8 grains per gallon, or 85 to 136 parts per million

HARD WATER:

9 to 12 grains per gallon; or 153 to 205 parts per million

VERY HARD WATER:

More than 12 grains per gallon, or more than 205 parts per million

Water Temperature

Water Temperature Guide

Wash Water Temperature	Used For	Comments
HOT 130°F (54°C) or above	<ul style="list-style-type: none"> • White and colorfast cottons. • Heavy soils. • Diapers. 	<ul style="list-style-type: none"> • Gives best cleaning for heavy, oily soils. • Helps prevent greying and yellowing.
WARM 100°F (38°C)	<ul style="list-style-type: none"> • Normally soiled permanent press and synthetic items. • Dark or non-colorfast colors. • Washable woolens. • Moderate soils. • Knits. 	<ul style="list-style-type: none"> • Less fading and bleeding of dye. • Safe for fabric finishes.
COLD* 70°-100°F (21.1°-37.8°C)*	<ul style="list-style-type: none"> • Lightly soiled fabrics. • Some non-colorfast colors. • Some normally soiled items with extra detergent. 	<ul style="list-style-type: none"> • Less effective cleaning than hot or warm water. • Dissolve powdered detergent in warm water before adding to washer or use a liquid detergent. • Pretreat spots, stains and heavy, oily soils. • Use longest wash time in cycle selected.

* Water can be too cold for effective washing. During cold weather, water may be too cold to dissolve detergent properly. If your tap water is less than 70°F (21.1°C), use a warm wash setting and follow instructions for a cold wash.

IMPORTANT: Use warm wash water and cold rinse water for PERMANENT PRESS and DELICATES Cycles to minimize wrinkling.

Energy Saving Tips

1. Use hot water only when necessary (heavy or greasy soils, whites, etc.). Use cold water for light soils.
2. Use cold rinses.

Although a warm water rinse is available, cold rinses are recommended for all loads, as they save energy and help keep wrinkles from setting into fabrics.

(A load rinsed in cold water may take longer to dry than one rinsed in warm water; however, more energy is used to heat the water for a warm rinse than is used during the longer drying time.)
3. Full loads make the best use of water-heating energy. If proper sorting results in less than full loads, adjust the water level to the size of the load.
4. Avoid rewashing.
 - Use recommended amount of detergent based on soil level, load size, and water hardness, see loading information on page 9.
 - Do not overload the washer, see page 11 for loading suggestions.
 - Use the cycles and wash times recommended for the wash load, fabric type and soil level.
 - Sort the wash load correctly, see Sorting, page 9.
5. Use high-speed spins on heavy fabrics to reduce required drying time.

Load Preparation

For best results, the following steps should be taken to prepare your clothes for washing.

- Make sure all pockets are empty. Tissues and other paper left in pockets can leave lint throughout the wash load. Turn pockets inside out.
- Turn cuffs down and brush away lint and dirt.
- Remove pins, buckles and other sharp objects and close zippers, snaps and hooks. This will help avoid scratching the basket, damage to the agitator and snagging of other load items.
- Remove unwashable trim and ornaments.
- Tie strings and sashes so they won't tangle.
- Mend tears, loose hems and seams.
- Treat spots and stains. See the Stain Removal Tips section on pages 24-26.
- Turn synthetic knits inside out. This will help avoid pilling. Some knits are stretched during manufacturing, and may shrink slightly during laundering.

Sorting

Always sort carefully for best washing results.

Sort by fabric and construction

- Sturdy cotton such as jeans, towels, work clothes.
- Knits such as sweaters and double knit clothing.
- Delicate items such as lingerie and fine washables.

Sort by color

Always wash synthetics and light-colored permanent press as a separate load, as they will easily pick up color from non-colorfast garments.

Separate heavily soiled items

Even if a garment would normally be washed with lightly soiled items, if it is heavily soiled, it should be washed separately. This will help other lightly soiled load items to become more thoroughly cleaned.

Separate lint givers from lint takers

Lint givers are laundry items that have a high cotton content (chenille, bath towels, sweatshirts), and lint takers are high in synthetic content (permanent press, knit sweaters) or tend to collect lint (corduroy). When possible, turn lint givers inside out.

Loading

When loading the washer, be sure to follow the proper sequence:

- add soap or detergent,
- add sorted wash load,
- make selections/start washing.

Add Soap or Detergent

If soap or detergent is added directly on top of clothing, stains may result (especially with liquid detergents). The following chart shows the correct amount of soap or detergent to use, based on the type of detergent and the level of water hardness in the wash water.

IMPORTANT: In areas where phosphate detergents are not allowed:

- Use increased amounts of liquid detergent, based on the level of water hardness and amount of soil in the wash load.
- Use a non-precipitating water conditioner in the wash and deep rinse.
- Install a mechanical water softener if water is very hard and soap (not a synthetic detergent) is used.

Extra Capacity Washer (highest water level only)

	WATER HARDNESS IN GRAINS			
	0-4 gr.	4-10 gr.	10-20 gr.	20+ gr.
Powdered Detergents				
concentrated low suds/phosphate	½ c.	¾-1 c.	1¼ c.	1½ c.
normal suds/phosphate	1 c.	1¼ c.	1½-1¾ c.	2 c.
concentrated low suds/non-phosphate	½-¾ c.	1 c.	1¼-1½ c.	1¾-2 c.
normal suds/non-phosphate	1 c.	1⅓ c.	1¾ c.	2 c.
Liquid Detergents	¼-½ c.	½-¾ c.	1 c.	1¼ c.

Tips on Detergent Use

- Measure your detergent carefully. Use the correct amount based on level of water hardness and the amount of wash load soil.
- Using too little detergent is a common cause of laundry problems. You need enough detergent to hold the soil as it drains away with the wash water.
- Package directions are usually based on:
 - moderate water hardness (4 to 6 grains)
 - lightly soiled items
 - normal mixed loads
- Follow package directions carefully, but use more detergent for:
 - hard water
 - cooler wash water
 - full loads
 - heavily soiled items
- Do not judge the amount of detergent to use by the amount of suds in the wash basket. Some detergents will generate less suds than others.
- If too many suds are generated by the recommended amount of your detergent, try a low suds detergent. Do not reduce the amount of your current detergent to less than the recommended amount; clothes may not become clean.

Add Sorted Wash Load

Add the wash load before starting the wash cycle. When clothes are added to the washer after the tub is full of water the washer may tend to become overloaded.

IMPORTANT: Do not overload.

Overloading or packing can:

- cause poor cleaning
- increase wrinkling
- cause excessive lint
- wear out items faster (example: pilling)
- tear clothing

Refer to page 11 for loading suggestions.

Loading Tips

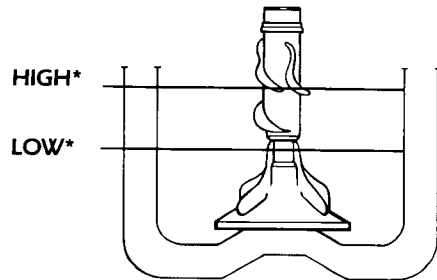
- Load by the amount of space items take up, not by their weight.
- Drop items in loosely, filling to the top of the basket. Do not wrap around agitator or damage to clothing may result.
- Load evenly to maintain washer basket balance during washing and spinning. An off-balance load can cause the washer to vibrate during a spin cycle.
- Mix large and small items in each load for ease of load movement through the wash water. This will help give the best cleaning with wrinkle-free results. If the washer is loaded correctly, items will go below the water surface and reappear later.
- To reduce wrinkling, permanent press and synthetic knits should have more room to move in the water than items such as towels and jeans.
- When washing very large items, such as king- or queen-size sheets, do not load the washer as full as with other loads. Large sheets require more space in the washer basket for movement and proper cleaning.

Load Sizes and Water Levels

Do not overload the washer.

For best cleaning results, the load must be able to move freely in the water.

Too big a load or too little water can cause wear or tearing of load items.



*Approximate fill with load.

Loading Suggestions (High Water Level)

Smaller load sizes should be washed in lower water levels.

Mixed Load

- 3 double sheets
- 4 pillowcases
- 8 T-shirts
- 6 pair shorts
- 2 shirts
- 2 blouses
- 8 handkerchiefs

Permanent Press

- 2 double or 1 king size sheet
- 1 tablecloth
- 1 dress
- 1 blouse
- 2 slacks
- 2 pillowcases

Heavy Work Clothes

- 3 pair pants
- 3 shirts
- 4 pair jeans
- 1 coverall
- 1 overall

Knits

- 3 slacks
- 3 blouses
- 6 shirts
- 4 tops
- 4 dresses

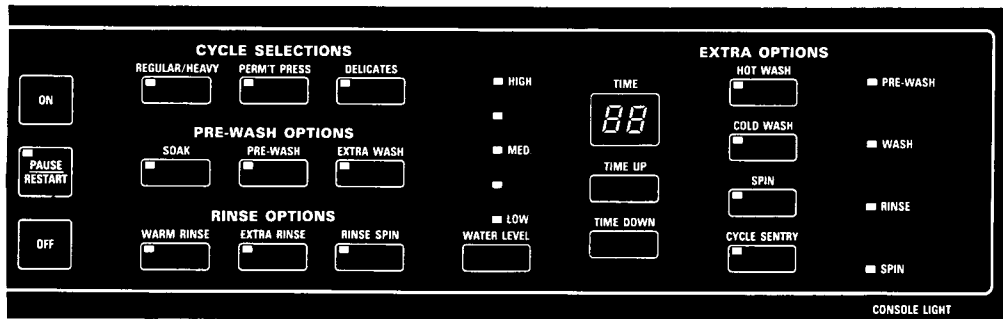
Towels

- 10 bath towels
- 10 hand towels
- 14 wash cloths
- 1 bathmat

Delicates

- 3 camisoles
- 1 quilted robe
- 4 slips
- 4 panties
- 2 bras
- 2 nighties
- 1 baby's dress

Make Selections



To reduce the risk of fire, electric shock, or injury to persons, read the Important Safety Instructions on page 3 before operating your washer.

Touch On

The washer will power up and the Cycle Selection lights will scan. The controls are now ready for selection.

IMPORTANT: You have 15 minutes to make a selection or the washer will automatically shut off.

When a selection has been accepted, 1 beep will sound and the indicator light will stay on. When a selection has not been accepted, 3 beeps will sound and the indicator light will not stay on.

Select a Pre-Wash Option

If pre-washing is not needed, skip to the next step.

A PRE-WASH Option must be selected before a Cycle Selection or within 8 seconds after a selection. The washer will shut off after completing a SOAK or PRE-WASH option. The EXTRA WASH Option must be combined with a Cycle Selection. See page 16.

All options can be changed any time before they have started.

Select a Cycle Selection

Touch a Cycle Selection pad that best matches the type of load being washed. See pages 14 and 15.

IMPORTANT: The lights will scan until a selection has been made or until the washer shuts off. The washer will begin filling shortly after a cycle selection is made.

For more selection time, touch PAUSE/RESTART pad at any step if you want more time to decide on another selection. PAUSE/RESTART will stop the washer for up to 15 minutes. To restart the washer, touch the blinking PAUSE/RESTART pad.

Cycle selections may only be changed up to the start of the first FILL, about 8 seconds after a selection has been made. If the washer has started the first FILL, touch OFF, then start over by touching ON.

Select a Water Level

The washer will automatically fill to the water level between MED and HIGH. If more or less water is needed, touch the Water Level Pad. The non-blinking light shows the selected water level. The blinking light shows the actual water level.

Select the setting that fits the size of load you are washing. See page 11 for load size and water levels.

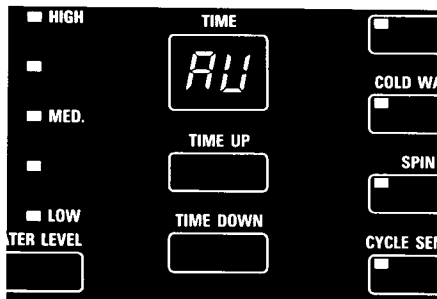
To Change Wash or Rinse Temperatures

The washer is programmed to automatically provide a warm wash and cold rinse in every selection. If another wash or rinse temperature is wanted, touch the pad that corresponds to the temperatures wanted. The wash water temperature can be changed any time during the first fill.

A cycle selection must be selected before HOT WASH or COLD WASH options can be accepted.

IMPORTANT: To save energy and receive the most wrinkle-free results, use a cold rinse for all fabrics.

When one indicator light comes on but another goes off, this tells you the second selection has canceled the first.



To Change the Wash Time

The TIME Display shows the total amount of wash agitation time selected. When the first fill begins, the display changes to "AU," indicating automatic operation.

Any time during wash agitation the TIME UP or TIME DOWN pad can be touched. The display will show the number of minutes left in wash agitation. During the final spin the display changes to show the number of minutes left until the cycle is finished and the load can be removed.

When a Cycle Selection is touched, the amount of wash agitation time will appear in the TIME Display. The wash agitation time which appears is the recommended time for that cycle (for normally soiled items).

If more or less time is desired, touch the TIME UP or TIME DOWN pad until the desired amount of time is showing in the TIME Display, before the end of the first fill.

To change the wash time after the display changes to "AU" before the end of the first fill:

1. Touch the TIME UP or TIME DOWN pad. The display will show the current wash agitation time.
2. Touch the TIME UP or TIME DOWN pad until desired wash time is displayed.

See pages 14 and 15 for minimum and maximum wash times.



To Restart the Washer

The washer is designed to remember where it was in the cycle when PAUSE/RESTART is touched. It will not remember if there is a power interruption, such as a blown fuse.

If power is lost at the beginning of a wash cycle:

1. Touch ON.
2. Touch Cycle Selection and Options.

The washer will finish filling, if needed, and wash according to the new selections.

If power is lost with water remaining in the washer:

1. Touch ON.
2. Touch SPIN to drain and spin the load.
3. After the washer stops, touch ON again.
4. Touch Cycle Selection and Options.

The washer will wash according to the new selections.

If power and memory are lost at the beginning of a rinse cycle:

1. Touch ON.
2. Touch RINSE SPIN to finish filling and/or rinsing.

All Wash Cycles include the following options:

- More or less Wash Time.
- HOT WASH or COLD WASH.
- WARM RINSE/EXTRA RINSE.
- EXTRA WASH Option can be used.



Regular/Heavy Cycle

This cycle is used for heavy to moderately soiled items and fabrics of sturdy construction, such as work clothes, denim jeans, and coveralls.

To select this cycle, touch ON, and REGULAR/HEAVY. Pre-programmed Wash Time is 10 minutes. Wash Time can be adjusted. The minimum time is 7 minutes and the maximum time is 14 minutes.

The TIME Display will show the total wash agitation time. See the cycle sequence below. The washer will start to fill in 8 seconds.

Cycle Sequence is as follows:

FILL Warm

▼

WASH 7 – 14 Minutes, High Speed

▼

DRAIN No Agitation

▼

SPIN Medium to High Speed, 2 Spray Rinses

▼

FILL For Deep Rinse

▼

RINSE 4 Minutes, High Speed

▼

DRAIN No Agitation

▼

SPIN Medium to High Speed, 2 Spray Rinses

Permanent Press Cycle

This cycle features a **COOL DOWN** rinse that occurs before the total wash time has elapsed. The cool down rinse helps to keep wrinkles from setting into synthetic fabrics and clothes with a permanent press finish.

IMPORTANT: For best results with this cycle, use a cold water rinse. Using cold rinse water saves energy and helps minimize wrinkling.

To select this cycle, touch ON and PERM'T PRESS. Pre-programmed Wash Time is 8 minutes. Wash Time can be adjusted. The minimum time is 5 minutes and the maximum time is 10 minutes.

The TIME Display will show the total wash agitation time. If a new Wash Time is selected, the total time will consist of 4 minutes Low Speed Wash and the remaining time High Speed Wash. See the cycle sequence below. The washer will start to fill in 8 seconds.

Cycle Sequence is as follows:

FILL Warm

▼

WASH 1 – 6 Minutes, High Speed

▼

WASH 4 Minutes, Low Speed

▼

PARTIAL DRAIN

▼

FILL Cold

▼

WASH 2 Minutes, High Speed

▼

DRAIN No Agitation

▼

SPIN Medium Speed, 2 Spray Rinses

▼

FILL For Deep Rinse

▼

RINSE 2 Minutes, High Speed

▼

DRAIN No Agitation

▼

SPIN Low to Medium to High Speed, 2 Spray Rinses

Delicates Cycle

Delicate items and washable knits are washed and spun gently on this cycle. Nylon hosiery should be washed in a net laundry bag to avoid tangling.

To select this cycle, touch ON and DELICATES. Pre-programmed Wash Time is 6 minutes. Wash Time can be adjusted. The minimum time is 5 minutes and the maximum time is 8 minutes.

The TIME Display will show the total wash agitation time. The washer will start to fill in 8 seconds.

Cycle Sequence is as follows:

FILL Warm



WASH 5 – 8 Minutes, Low Speed



DRAIN No Agitation



SPIN Medium Speed



FILL For Deep Rinse



RINSE 2 Minutes, Low Speed



DRAIN No Agitation



SPIN Medium Speed, 2 Spray Rinses

Options



Soak Option

Heavily soiled items that require maximum soil removal or stained items that need extra care may need to be soaked for best cleaning.

Brief periods of agitation and soaking combine to help loosen soils and remove stains.

When using the SOAK Option, use enough detergent for one wash. Add detergent again when setting washer for a regular wash cycle.

To select this option, touch ON and SOAK. The washer will start to fill in 8 seconds.

IMPORTANT: The washer will shut off after completing the SOAK Option.

Cycle Sequence is as follows:

FILL Warm



WASH 4 Minutes, High Speed*



SOAK 26 Minutes with Occasional Agitation



WASH 4 Minutes, High Speed*



DRAIN No Agitation



SPIN Medium Speed



SPIN High Speed**

continued on next page

The washer will stop after spin. After the SOAK Option has been completed, a Cycle Selection can be chosen.

For best results, use warm water for soaking stained items. Hot water can set stains. Also, special stains may need special treatment. See Stain Removal Tips.

*Low Speed if DELICATES selected first.

**No High Speed SPIN if PERMANENT PRESS or DELICATES selected first.

Pre-Wash Option

Stained, heavily soiled or greasy items may need to be prewashed for best cleaning.

Prewashing helps remove protein-type stains like blood, milk, and grass. It also helps loosen soil before washing.

When using the PRE-WASH Option, use enough detergent for one wash. Add detergent again when setting washer for a regular wash cycle.

To select this option, touch ON, check water level and touch PRE-WASH. The washer will start to fill in 8 seconds.

IMPORTANT: The washer will shut off after completing the PRE-WASH Option.

Cycle Sequence is as follows:

FILL Warm



WASH 4 Minutes, High Speed*



DRAIN No Agitation



SPIN Medium Speed



SPIN High Speed**

The washer will stop after spin. After the PRE-WASH Option has been completed, a Cycle Selection can be chosen.

For best results, use warm water for soaking stained items. Hot water can set stains. Also, special stains may need special treatment. See Stain Removal Tips.

*Low Speed if DELICATES selected first.

**No High Speed SPIN if PERMANENT PRESS OR DELICATES selected first.

Extra Wash Option

Heavily soiled items that require maximum soil removal may be run through the EXTRA WASH Option.

Double the recommended amount of detergent when using this cycle.

To select this option, touch ON and EXTRA WASH. The washer will start to fill in 8 seconds.

IMPORTANT: The washer will not begin EXTRA WASH until a Cycle Selection has been made.

Cycle Sequence is as follows:

FILL Warm



WASH 4 Minutes, High Speed*

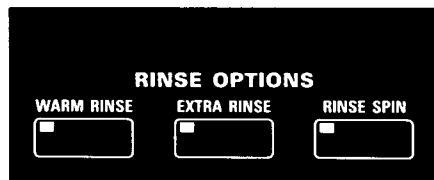


PARTIAL DRAIN



ADVANCES To Selected Cycle

*Low Speed if DELICATES selected first.



Warm Rinse Option

Cycle Selections are preset for cold rinse water. To get warm rinse water, touch ON, touch Cycle Selection and touch WARM RINSE.

Extra Rinse Option

Use EXTRA RINSE for towels, jeans or heavily soiled items that need extra detergent. The rinse temperature, agitation speed and spin speed will be the same as the first rinse.

Cycle Sequence is as follows:

FILL*



RINSE**



DRAIN No Agitation



SPIN***

*Rinse temperature same as the first rinse.

**REGULAR/HEAVY, 4 minutes High Speed. PERMANENT PRESS, 2 minutes High Speed.

DELICATES, 2 minutes Low Speed.

***REGULAR/HEAVY, Medium to High Speed.

PERMANENT PRESS, Low to Medium to High Speed, 2 Spray Rinses.

DELICATES, Low Speed.

Rinse Spin Option

For loads needing rinse and spin only. Also useful for finishing a cycle that's been canceled by a power interruption or by turning power off.

To select this option, touch RINSE SPIN. Pre-programmed agitation speed and spin speed can be adjusted by touching Cycle Selection, with desired speeds, before touching RINSE SPIN Option.

Cycle Sequence is as follows:

FILL Cold



RINSE 4 Minutes, High Speed*



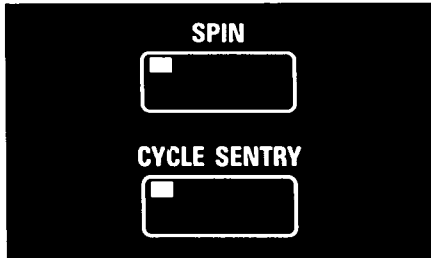
DRAIN No Agitation



SPIN High Speed**

*REGULAR/HEAVY, pre-programmed. PERMANENT PRESS, 2 minutes High Speed. DELICATES, 2 minutes Low Speed.

**REGULAR HEAVY, pre-programmed. PERMANENT PRESS, Low to Medium to High Speed, 2 Spray Rinses. DELICATES, Low Speed.



Spin Option

The SPIN Option spins and drains loads or items that only need the water spun out of them. This option is also useful for loads canceled by a power interruption.

To select this option, touch SPIN. Spin cancels all other selections. The washer starts cycle sequence right away, as described below. Spin speed can be adjusted by touching Cycle Selection with desired speed before touching SPIN option.

Cycle Sequence is as follows:

If water level is lower than 4 inches, cycle starts at SPIN Medium Speed as described below.

If water level is higher than 4 inches:

WASH 10 Seconds



DRAIN No Agitation



SPIN Medium Speed



SPIN High Speed*

*REGULAR/HEAVY, pre-programmed. PERMANENT PRESS, Low to Medium to High Speed. DELICATES, Low Speed.

Cycle Sentry Option

The CYCLE SENTRY allows you to control the End of Wash Signal and the Final Rinse Signal. Both signals can be canceled by touching the CYCLE SENTRY pad. The Cycle Sentry Indicator Light will go off. Touch CYCLE SENTRY again to replace the signals and turn on the indicator light.

The End of Wash Signal will beep 5 times at the end of a WASH Cycle. This tells you the wash is done and the load can be removed.

The Final Rinse Signal will beep once at the beginning of the last rinse in a cycle. This tells you the washer is filling for the final rinse.

Other Instructions

Washer Operation

The washer will pause briefly throughout each cycle. These pauses are normal. They allow for the reversing of the motor, normal washer operations, and the cool down portion of the PERM'T PRESS Cycle.

Wash Times

For best fabric care and washability, maximum and minimum wash times are programmed into each cycle. The washer will not accept less or more time than the minimum or maximum wash times. (See pages 14 and 15 for detailed times.)

The Indicator Lights

The indicator lights show what portion of the cycle the washer is in: PRE-WASH, WASH, RINSE, SPIN.

PRE-WASH indicates any pre-wash option.

WASH indicates that the washer is filling, agitating, draining or spinning in any wash cycle or in the cool down portion of PERM'T PRESS.

RINSE indicates the washer is filling, agitating, draining or spinning during the rinse portion of the cycle.

SPIN indicates the washer is spinning.

Self-Clean Lint Filter

As load items are being washed, lint particles from the wash water automatically collect on the SELF CLEAN LINT FILTER located between the basket and tub. As the washer drains, collected lint is carried away with the wash and rinse water. If the washer drains into a tub, remove any lint collected in the drain or strainer.

Use of Clothes Washer Dispensers

Liquid Bleach Dispenser

The bleach dispenser is located near the lower right edge of the washer tub opening.

Always measure bleach – never use more than 1 cup for a full load.

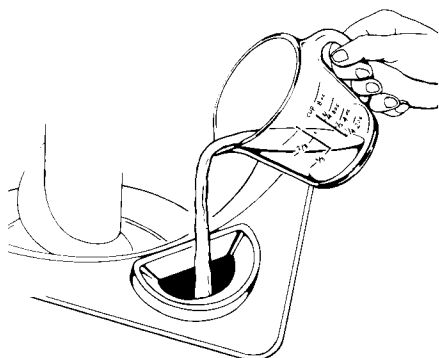
Use less bleach with lower water level settings.

- Follow directions on bottle for safe use.
- Use a cup with a pouring spout to avoid spilling.

TO USE:

1. Add detergent and load to basket.
2. Pour measured bleach carefully into dispenser. **DO NOT** let bleach splash, drip or run down into the washer basket.

Undiluted bleach will damage any fabric it touches.



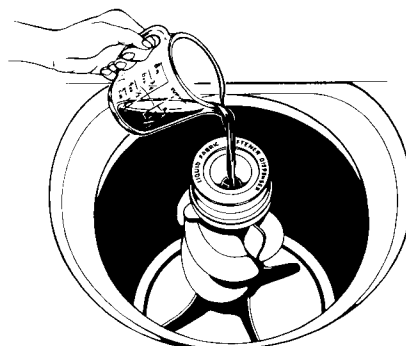
3. Start the washer. Bleach will be diluted automatically during the wash part of the cycle.

For more information on the use of chlorine bleach, see page 22.

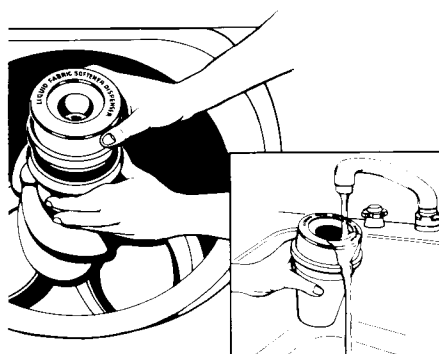
Fabric Softener Dispenser

TO USE:

1. Add detergent and load to basket.
2. Add liquid fabric softener to the dispenser following the instructions recommended on the bottle. Avoid dripping or spilling any fabric softener on the load because fabrics may stain.



3. Add warm water to fill dispenser until liquid reaches the opening.
4. Diluted fabric softener will be added to the load when the washer fills for the rinse part of the cycle. **IMPORTANT:** Do not stop the washer during the spin that follows the wash part of the cycle or the fabric softener will be added to the remaining soapy wash water, which can cause stains.



5. Clean dispenser after each use with warm water. To remove the dispenser, pull up on the top portion of the agitator. Clean by holding under faucet. Replace after cleaning.

IMPORTANT: Do not add detergent to dispensers. The dispensers may clog.

For more information on the use of fabric softeners, see page 23.

Caring for the Clothes Washer

- When not washing, keep both water faucets off. This takes the pressure off the water inlet valve and hoses.

For maximum use satisfaction and longer washer life, follow these guidelines:

- Wet or damp laundry should not be stored in your washer.
- Urine-soaked clothing should not be stored or soaked in your washer.
- Vinegar and other acids should not be used in your washer.
- Failure to follow these guidelines may result in damage to the washer basket finish.
- Clothing may be soaked up to four hours in your washer as long as detergent has been added to the water. If chlorine bleach is needed for soaking, it may be used as long as detergent is present in the water.
- Soaking without detergent in the wash water may result in damage to the washer basket finish.
- Sharp or heavy objects should never be placed on or in the washer, or finishes may be damaged.
- To clean washer exterior, wipe with a soft damp cloth.

Winterizing

Because a small amount of water stays in the washer pump after draining, freezing can cause a lot of damage. If your washer is stored or moved during the cold weather, follow this procedure:

1. Shut off both water faucets.
Disconnect and drain water inlet hoses.
2. Pour 1 quart of R.V.-type antifreeze in the basket.
3. Touch the SPIN Option. Allow the washer to run about 30 seconds to mix the antifreeze and water, then touch the OFF pad, stopping the washer.

To Use The Washer Again

The winterizing procedure mixes antifreeze into the water pump to protect against freezing and damage. Before the washer is used again, the antifreeze must be removed from the pump by following these steps:

1. Flush the water pipes and hoses.
2. Connect hoses to the washer.
3. Turn on the water faucets.
4. Run the washer through a complete REGULAR/HEAVY Cycle, without clothing, using one cup of detergent.

The Console Light

The fluorescent console light is under the console top. The console light switch is on the bottom right side of the console. To turn on the light, push in the switch and hold it for one or two seconds. Push the switch again to turn the light off.

Replacing the Console Light

To avoid possible shock hazard, unplug the washer or turn off electric power at the main power supply.

1. Flip up the console top by grasping it with both hands near each end and lifting the front edge up.
2. Remove lamp socket safety cover at each end of the fluorescent tube.
3. Grasp the fluorescent tube at both ends. Turn the tube away from you until both ends come out of the receptacles. Replace with a 15-watt cool-white (#F15T8) fluorescent tube.
4. Replace lamp socket safety covers, and close the console top.
5. Plug in washer or turn electric power back on at main power supply.

Service or performance problems caused by the use of any product not manufactured by KitchenAid, Inc. are the responsibility of the manufacturer of that product.

Common Washing Problems and Causes

Problem	Cause
Brown or Yellow Stains	<ul style="list-style-type: none"> • chlorine staining • iron in water heater or pipes • iron and manganese in water • washer basket rusted from excessive soaking
Dye Transfer	<ul style="list-style-type: none"> • improper sorting • load left in washer
Gray Whites or Dingy Colors	<ul style="list-style-type: none"> • improper sorting • water temperature too low • not enough detergent • using soap in water that is too hard
Greasy Looking Spots	<ul style="list-style-type: none"> • undiluted fabric softener • fabric softener in wash water • not enough detergent
Lint	<ul style="list-style-type: none"> • improper sorting • paper or tissue in pockets • pilling being mistaken for lint • overloading • not enough detergent • clogged lint filter
Load Too Wet After Spin	<ul style="list-style-type: none"> • slow spin • cold rinses • lid is opened before spinning is completed
Shrinking	<ul style="list-style-type: none"> • fabric type (some knits stretch during manufacturing, and laundering returns fabric to original size) • care label directions not followed
Snags, Rips, Holes	<ul style="list-style-type: none"> • misuse of chlorine bleach • sharp articles not removed from pockets, etc. • overloading • items damaged before washing • fasteners not fastened
Stiff, Rough Fabrics (usually Cottons)	<ul style="list-style-type: none"> • spin too slow or too short • using soap in water that is too hard (use detergent if you live in a hard water area) • not enough detergent • line drying
Twisting/Tangling	<ul style="list-style-type: none"> • overloading • improper loading
Wrinkling	<ul style="list-style-type: none"> • overloading • improper spin speed • load not immediately removed from washer after cycle is completed • improper rinse temperature • poor permanent press finishes • cycle selection is incorrect, based on fabric type
Yellow Areas – Built-Up Body Oils	<ul style="list-style-type: none"> • water temperature too low • not enough detergent

Laundry Aids

To help avoid the danger of a fire or explosion:

NEVER store flammable solvents or liquids near your washer.

NEVER put dry-cleaning solvents or fluids directly into your washer.

NEVER put items treated with solvents in your washer until they have been completely rinsed and air dried.

- **The fumes from these substances can create a fire hazard or explosion.**

Keep stain removal products out of the reach of children... preferably in a locked cabinet.

Soap or detergent is used to help:

- Loosen and remove soil from items in the load.
- Hold soil and lint in the water so they can be drained away with the water.

If too little soap or detergent is used, soil and lint can settle back on the clothes.

The following pages list some common laundry aid products and techniques for best washing results.

Follow all package directions carefully.

Chlorine Bleach

- Use bleach only in the wash so that it can be removed in the rinse.
- Follow directions on care labels. Do not use chlorine bleach on wool, silk, spandex, acetates or some flame-retardant fabrics.
- Do not use chlorine bleach in water high in iron. Yellow stains or spotting may result.
- Always measure bleach and follow package directions. Never use more than 1 cup for a full load.
- Undiluted bleach will damage any fabric. The damage appears as rips, holes or tears, and may not show up until several washings later.
- If you do not use your bleach dispenser:

1. Let the washer fill and begin agitating the load and detergent.
2. Dilute measured bleach in 1 quart of water.
3. Pour diluted bleach around agitator, not directly on the load.

Oxygen Bleach (all fabric bleach)

Powdered or liquid oxygen bleach may be used on all types of fabrics. Use according to package directions with detergent. Do not use oxygen bleach in the bleach dispenser, because it may clog.

Bluing

Dry bluing (beads or flakes) may be added to the basket before adding soap or detergent. Liquid or tablet bluing should be mixed with 1 quart of warm water and added to the deep rinse. Follow package directions carefully.

Ammonia

Ammonia helps detergent work better by helping to cut grease and heavy soil.

To avoid the danger of fire or explosion, never use ammonia and chlorine bleach in the same wash. Hazardous fumes can be formed.

Pretreatment Products

Always follow the manufacturer's instructions with any pretreatment product. Aerosol applications remove oily soils on both cotton and polyester fabrics better than pump or squirt applications.

Enzyme Laundry Products

Some pre-soak products and regular detergents contain enzymes. Enzymes help break down protein-type stains such as blood, baby formula, meat juice and vegetable protein stains such as grass and tomatoes. Dissolve enzyme laundry products in warm water to help prevent spot fading of colored items.

Fabric Softeners

Fabric softeners help make fabrics soft and also help reduce static electricity and fabric wrinkling.

- Follow package directions carefully.
- Always dilute fabric softeners with ½ to 1 cup (125 to 250 mL) of warm water. Undiluted fabric softener can stain fabrics.
- Use only in deep rinse. Do not mix any other laundry products. This includes detergent, packaged water conditioners and bleaches. Mixing may cause greasy stains. Stains from fabric softeners can be removed by wetting the stain and rubbing it with liquid detergent or a bar of soap. Re-wash the stained item.
- Use correct amount. Too much fabric softener can make some items nonabsorbent (like diapers and towels). If this happens, either use less fabric softener or don't use it every time.
- Use the fabric softener dispenser. See page 19 for use information.

Packaged Water Conditioners

If your water is hard, laundry results will be better if you use a non-precipitating water conditioner. Non-precipitating water conditioners soften water by tying up hardness minerals so they will not be deposited on clothes (resulting in yellow or brown stains) and washer parts. Follow package directions for the correct use.

Tints and Dyes

Use tints and dyes in the washer according to instructions on the package. When you are finished with the tinting process, put chlorine bleach and detergent in the washer. Run through a complete cycle using hot water to remove excess dye or tint. If staining occurs on subsequent loads, repeat the above process.

IMPORTANT: Washer parts such as the agitator, washer lid, etc. may pick up dye color. Parts may be permanently discolored.

Disinfectants

You may want to use a disinfectant when...

- Someone has an infection or a contagious illness.
- Someone other than your family uses the washer.
- You use cold water for washing.

To disinfect a load...

- Select a disinfectant safe for the fabrics and colors in the load.
- Read and follow the package label carefully.
- Note any cautions.
- Measure disinfectant carefully and according to instructions.
- Do not use any disinfectant other than liquid chlorine bleach in the bleach dispenser.

To disinfect the washer...

- Set the controls for a hot wash with a low water level.
- Pour 1 cup liquid chlorine bleach into the basket.
- Run the washer through a complete cycle.

Starch

Starch adds crispness and body to fabrics. It is available in spray or powder form. Follow the package directions carefully.

Stain Removal Tips

1. Most stains are easier to remove when they are fresh.
2. Before treating any stain find out...
 - What kind of stain it is.
 - What kind of fabric it is and how colorfast it is (check label).
 - How old the stain is (washing and drying can set some stains).
3. Heat (hot or warm wash, or dryer) can make some stains permanent. Pretreat such stains or soils before washing.
4. When bleach is recommended, use a bleach that is safe for the fabric. See comments on bleach use, page 22.
5. Test stain remover on an inside seam or hidden corner of the item to see if color is removed.
6. Put the stained area face down on a paper towel or white cloth. Apply the stain remover to the back of the stain. This can force the stain off the fabric instead of through it.
7. A meat tenderizer or enzyme presoak will help break down some protein stains so they will be easier to remove.
8. Use dry-cleaning solvents in a well-ventilated room.
9. Stubborn stains may require more than one treatment. Do not machine dry between washings, or stain may become set.

The following items are often used in stain removal and may be kept on hand:

- Ammonia
- Alcohol (denatured or rubbing)
- A bar of soap
- Bleach
- Meat tenderizer
- Non-flammable dry-cleaning solvent
- Pre-wash soil and stain removers (liquid, spray, powder, enzyme pre-soak products).

Pay attention to warning and cautions on the product labels.

Alcoholic Beverage

These stains turn brown with age, so **treat immediately**. Sponge or soak fresh stains with cold water. Wash. If stains remain, soak 15 minutes in a solution of lukewarm water, liquid detergent and a few drops of white vinegar. Rinse and re-wash.

Blood

Rinse immediately or soak in cold water with enzyme pre-soak for 30 minutes or longer. Rinse. Rub detergent into any remaining stains. Rinse. If stains remain, put a few drops of 3% hydrogen peroxide on stain for 3-5 minutes. Rinse thoroughly. Wash.

Chocolate or Coffee

Sponge immediately with a **non-flammable dry-cleaning solvent** or apply a pre-wash soil-and-stain remover. Wash. If stain remains, apply a liquid detergent to stain or soak in warm water with an enzyme pre-soak. Re-wash.

Chewing Gum

Use ice to make gum hard. Scrape off what you can. Sponge with a **non-flammable dry-cleaning solvent**. Let dry. Wash.

Crayon and Candle Wax

Scrape off excess wax with dull knife. Sponge with **non-flammable dry-cleaning solvent**. Wash. If stain remains, soak in an enzyme pre-soak or oxygen bleach. Wash.

Cream, Milk or Ice Cream

Sponge with a **non-flammable dry-cleaning solvent**, or a pre-wash soil and stain remover. Wash. Repeat if necessary. If stains remain, apply a few drops of liquid detergent and a few drops of ammonia. Blot and rinse. If stains remain, soak in an enzyme pre-soak. Wash.

Deodorants and Antiperspirants

Light stain – Treat with liquid detergent or your regular laundry detergent. Wash in hottest water safe for fabric.

Heavy stain – Place face down on towel and treat with a paste of ammonia and oxygen-type bleach. Let stand for 30 minutes. Wash in hottest water safe for fabric.

Fabric Softener

Wet the stain and rub with liquid detergent or bar of soap. Re-wash the stained item.

Fat, Grease or Oil

Try any of the following treatments:

1. Use pretreatment stain remover. Follow label directions. Wash in hottest water safe for fabric.
2. Use talcum powder to absorb as much grease as possible. Sponge with a **non-flammable dry-cleaning solvent**. Wash.
3. Treat with liquid detergent or rub a detergent paste on the stain. Wash using hottest water safe for fabric.

Fruit Stains

Do not use soap on fruit stains. It will set stains.

Fresh stains: Soak immediately in cool water. Wash. If stains remain, cover area with a paste made of oxygen-type bleach, a few drops of hot water and a few drops of ammonia. Wait 15 to 30 minutes. Wash.

Old Stains: Sponge with white vinegar. Rinse. Repeat procedure for fresh stains.

Grass or Green Vegetables

Soak in warm or cold water, or sponge with denatured alcohol. Wash in water temperature and bleach safe for the fabric. For colored fabrics, check colorfastness before applying alcohol. On acetate fabrics, sponge with a **non-flammable dry-cleaning solvent**. If stains remain, bleach with 3% hydrogen peroxide. Rinse. Re-wash.

Ink or Ballpoint Pen Ink

Spray stain with an aerosol hair spray, acetone or rubbing alcohol. Sponge stain continuously until all bleeding stops. Let dry. Repeat if necessary. Wash. If stain remains, bleach if safe for fabric. (India and other indelible inks are almost impossible to completely remove.) Avoid use of acetone on acetate, triacetate or modacrylics.

Iron or Rust

For colored or noncolorfast items apply lemon juice and salt. Place in the sun to dry. Rinse thoroughly. Repeat if necessary. **For white or colorfast items** a liquid rust remover, available at grocery stores, may be effective. Test first on inside seam or hem. Be careful not to spill it on washer as it will remove the glossy finish on the porcelain-enamel top.

NEVER USE RUST REMOVER INSIDE WASHER AS IT WILL HARM PORCELAIN-ENAMEL FINISH ON THE BASKET.

Lipstick

Apply non-flammable dry-cleaning solvent or pre-wash soil and stain remover. Blot with absorbent material. Repeat if necessary. Rinse. If stain still remains, rub with liquid detergent. Wash.

Meat Juice, Egg

Scrape off excess egg with dull side of tableknife. Soak in cold or warm water with enzyme pre-soak at least 30 minutes. Treat grease stains with a non-flammable dry-cleaning solvent. Wash.

Mildew

Wash in hottest water safe for fabric. If stain remains, soak in warm water and an oxygen bleach for 15 to 30 minutes. Re-wash. (Old mildew stains are almost impossible to remove. Mildew fungus destroys or weakens fabrics.) An alternative to bleach is to treat with salt and lemon juice and dry in direct sunlight. Rinse and re-wash.

Mustard

Treat immediately. Scrape off excess mustard. Sponge with a **non-flammable dry-cleaning solvent** or a pre-wash soil and stain remover. Rinse. Work liquid detergent and a few drops of vinegar into stain. Rinse. If stain remains, apply 3% hydrogen peroxide. Rinse and wash.

Paint

Water Base – Treat stains while still wet. These paints cannot be removed after they have dried. Rinse in warm water to flush out paint. Sponge with a **non-flammable dry-cleaning solvent** and then wash.

Oil Base – Scrape off fresh paint. Sponge with a **non-flammable dry-cleaning solvent** or treat stain with recommended thinner. While stain is wet with solvent, rub liquid detergent into it. Wash with hottest water safe for fabric.

Perspiration

Remove stains before ironing.

Perspiration stains may weaken

fabric. Wash or sponge stains thoroughly with detergent and warm water. If perspiration has changed the color of the fabric, use one of the following treatments:

Fresh stains: Apply ammonia to stains. Rinse. Launder to remove ammonia odor.

Old stains: Apply white vinegar to stains. Rinse. Launder to remove vinegar odor.

Scorch

Severe scorch cannot be removed.

Wet stain with 3% hydrogen peroxide. Cover with a dry cloth and press with an iron as hot as is safe for fabric. Rinse well. Wash, or wet with lemon juice and spread in the sun to dry. Wash.

Caring for Special Items

Most items have care labels with laundering instructions. Always follow label directions when they are available. General laundering instructions for some special washables are included in this section.

Blankets and Woolens

- Electric Blankets (check manufacturer's recommendations)
- Woolen Blankets
- Washable Woolen Garments
 1. Measure blanket or trace outline of garment before washing.
 2. If binding is extremely soiled, brush with a concentrated solution of soap or detergent.
 3. Add detergent or mild soap and water conditioner to basket. Fill and agitate briefly to dissolve detergent.
 4. Stop washer; unfold blanket. Load in washer evenly around agitator. Soak 10 to 15 minutes.
 5. Start washer. Set control to drain and spin. Spin about 1 minute. (See washer instructions.)
 6. Fill washer for deep rinse. (If you wish to use a fabric softener to increase fluffiness or reduce static electricity, add it during the deep rinse.) Allow the washer to rinse, drain, and spin.
 7. Lay item on flat surface and block by gently stretching to original measurement. Woolens tend to shrink more the first time they are washed. This is normal.

For best results, follow the care label drying instructions.

To dry on line, choose a breezy day and hang blanket in shade over two lines. Pin binding edges together over line and straighten edges. When blanket is partially dry, change position and straighten again. When dry, brush up nap with wire or nylon brush.

- Cotton, Rayon and Synthetic Blankets

Wash as recommended for permanent press fabrics.

Curtains, Draperies, and Slip Covers

- Be sure fabric is washable, shrink resistant, and colorfast before washing.
- Select water temperature and cycle according to type of fabric.
- Shake or vacuum to remove loose dirt.
- Pre-wash or soak if badly soiled.
- Wash small loads. Crowding will cause wrinkling.
- Dry in dryer or on the line.
- Replace slipcovers on furniture while still slightly damp. They will dry to fit tightly.

IMPORTANT: Sun-damaged curtains and draperies will tear whether hand or machine washed.

Diapers and Baby Clothes

- Rinse immediately. Soak diapers in a solution of lukewarm water and a small amount of detergent until you are ready to wash them.
- Treat spots and stains before washing.
- Spin excess water from diapers before washing.
- Wash diapers, follow the Water Temperature Guide for white cottons and linens, page 7.
- Wash small items in a mesh bag.

IMPORTANT: You may wish to use bleach or a special soaking product for soaking diapers. Do not use liquid fabric softener every time. Overuse of fabric softener reduces the absorbency of diapers.

Elastics

- Elastics pick up oil from the body. Since oil damages elastics, wash often to help reduce the damage.
- Use warm enough water and sufficient detergent to remove oils.
- Dry at lowest dryer temperature setting. Remove from dryer while slightly damp.

Flame Retardant Finishes

Some items may be treated to improve their resistance to burning if exposed to flame. Such items will be clearly labeled.

To help keep flame retardant qualities through continuous use and washing, wash according to the manufacturer's instructions.

Glass Fiber Materials

Do not wash glass fiber materials in your washer. Some fibers can remain in the washer. These glass particles could stick to fabric washed in the next load and cause skin irritation.

Napped Items

- Corduroy
- Velveteen

1. Use hot or warm water, depending on colorfastness.
2. Turn inside out before washing.
3. Restore fluffiness in your dryer. If line dried, place on hangers to dry and brush up nap.

Permanent Press Fabrics

Permanent press is a special finish applied to fabrics. It helps the garment to stay smooth and wrinkle-free... if it is washed correctly.

When the finish is heated (as in hot water or in the dryer) it softens and becomes pliable. It will give up wrinkles at this time.

Permanent press items should not be crushed while warm (in spin or when dryer stops.) Wrinkles will be put back in. Your KitchenAid washer has a special cool-down cycle for permanent press to help prevent setting in wrinkles.

1. **Wash frequently.** Permanent press garments stay so fresh looking that people tend to postpone laundering. Once they become soiled and stained they are difficult to wash clean.
2. **Remove stains as soon as possible.** Pretreat stains or heavy soils with a liquid detergent, a paste made from your regular detergent, or a special pretreatment product.

3. **Sort properly.** Always wash whites in a separate load to prevent color pick-up from other garments.
4. **Wash small loads.** Crowding in the washer can cause wrinkling.
5. **Select wash time and water temperature according to amount of soil.**
6. **Use a cold rinse.**
7. **Add a diluted fabric softener** in deep rinse to reduce the static electricity that attracts lint and makes garments cling.
8. **Follow instructions on the garment's label for proper use of bleach.**
9. **Tumble dry** for best results and **remove load as soon as tumbling stops** to help prevent setting in wrinkles.

Pillows and Stuffed Toys

- Feather
 - Polyester (if manufacturer suggests machine washing)
 - Foam
1. Be sure pillow covers are securely stitched.
 2. Partially fill washer with water; add detergent; agitate until detergent is dissolved.
 3. Place two pillows in washer on opposite sides of agitator to balance load.
 4. Allow washer to completely fill and continue through cycle.
 5. Stop the washer occasionally to press air from item being washed.

IMPORTANT: Washing feather pillows is not recommended unless they are dryer dried.

6. Dry foam rubber items without heat (air dry cycle).

Do not dry foam rubber items on heat setting of dryer. Use air setting or line dry. Drying in a heated dryer may damage items or be a FIRE HAZARD.

Plastic and Rubber Items

- Shower Curtains
- Table Cloths
- Baby Panties
 - Treat as delicate items.
 - Wash in warm water.
 - Wash small items in a mesh bag.
 - Dry **without heat**.

Quilts and Bedspreads

- Treat quilted items as a “delicate item.”
- Wash one quilt or bedspread at a time. Distribute evenly around agitator.
- If dried on a line, shake occasionally; for best results, dry in a dryer.
- Do not wash cotton-filled comforters unless they are quilted or stitched; cotton batting, when only tucked, tends to slip and become lumpy.
- **DO NOT OVERLOAD**, some items may be too large for the washer.

Scatter Rugs

1. Check label to be sure rug is washable and colorfast.
2. Shake or vacuum well.
3. Pre-wash or soak rug if it is badly soiled.
4. Wash more than one small rug at a time. If you wash only one small rug, add bath towels to balance the load. A larger rug should be distributed around the agitator to balance the load. Remember, for good washing results the rug should move freely during agitation.

Snowsuits, Vests, Jackets, Etc.

- Nylon
- Polyester Base
 - Follow the care label instructions to select the proper water temperature and cycle.
 - Pre-soak items before washing if badly soiled.
 - Wash only one jacket or snowsuit at a time. Load item in washer evenly around the agitator.
IMPORTANT: Bulky synthetic items often float on top of the water. Stop the washer from time to time to press air from item being washed.
 - Two rinses may be necessary.
 - Do not overload, some items may be too large for the washer.

Towels

Some towels, particularly those made of a blend of synthetic fibers and natural fibers (polyester and cotton blends), may shed more lint than other towels. When towels are laundered, the lint screen in your dryer may get full faster. Be sure to remove the lint from the dryer lint screen when you launder new towels.

Tinted, Dyed or NonColorfast Items

For tinting or dyeing in the washer, follow package directions and information on page 23 for best results.

To wash noncolorfast items, follow care label directions to reduce the amount of dye transfer. **Wash separately.** Clean the washer according to instructions on page 20.

Washable Knits

Knits are comfortable to wear because they stretch and give. However, this “stretchy” factor means they will be less stable than a woven fabric when washed.

When manufactured, some knit fabrics may be stretched. When the garment is washed, the fabric can return to its original size. This is the nature of knits when they are washed... either by hand or washer.

Knits made of synthetic fibers, such as polyester, acrylic and nylons, are more likely to keep their original size than those made of cotton or rayon. Knit garments made of a blend of synthetic fiber and a cellulosic fiber, such as cotton or rayon (at least 50% synthetic fiber in blend), also hold their size better than those of cotton or rayon.

1. Select cycle, wash temperature and time depending upon fiber contents, construction of garment, amount of soil and colorfastness.

2. Follow garment manufacturer’s recommendations on the care label or hang tag.
3. To prevent snagging, close zippers, fasten hooks and eyes, and turn wrong side out.
4. Sort properly. White synthetic fiber items pick up color readily from other items.
5. Wash small loads to reduce pilling and lint generation on items.

For Service or Assistance

Follow These Steps

1. If your washer should fail to operate, review the following list before calling your dealer. You could save the cost of a service call.

If your washer does not fill:

- Is the power supply cord plugged into a live circuit with the proper voltage?
- Are both water faucets open?
- Has a fuse blown, or is the circuit breaker open?
- Are the water supply hoses kinked?
- Has the Pause/Restart pad been pressed?

If your washer does not spin:

- Is the lid closed?
- Is the power supply cord plugged into a live circuit with the proper voltage?
- Has a fuse blown, or is the circuit breaker open?

If your washer stops during a cycle:

- Remember, the washer pauses briefly between each portion of every cycle. The pauses are normal.

Make sure the drain hose is higher than the water level in the washer. If it isn't:

- The washer may seem to be draining during wash and rinse cycles.
- Water can siphon out. (See INSTALLATION INSTRUCTIONS.)

If the console light does not work:

- Did you push and hold in the light switch?
- Is the fluorescent tube burned out?

2. If the problem is not due to one of the above items:
 - Call your dealer or repair service he recommends.
 - All service should be handled locally by the dealer from whom you purchased the unit or an authorized KitchenAid servicer.

3. In the event you are unable to obtain the name of a local authorized KitchenAid servicer:

- Call KitchenAid Customer Relations, TOLL FREE:
1-800-442-1230.

- A Customer Relations representative can recommend a qualified service company in your area.

- If you must call or write, please provide: Model Number, Serial Number, Date of Purchase and a complete description of the problem. Write to:

Customer Relations Department
KitchenAid, Inc.

P.O. Box 558

St. Joseph, MI 49085-0558

Please include a daytime phone number in your correspondence.

4. If you are not satisfied with the action taken:

- Contact the Major Appliance Consumer Action Panel (MACAP). MACAP is a group of independent consumer experts that voices consumer views at the highest levels of the major appliance industry.

- Contact MACAP only when the dealer, authorized servicer, or KitchenAid, Inc. have failed to resolve your problem.

Major Appliance Consumer
Action Panel
20 North Wacker Drive
Chicago, IL 60606

- MACAP will in turn inform us of your action.

KitchenAid™

Clothes Washer Warranty

LENGTH OF WARRANTY:	KITCHENAID WILL PAY FOR:	KITCHENAID WILL NOT PAY FOR:
ONE YEAR FULL WARRANTY from date of purchase.	Replacement parts and repair labor costs to correct defects in materials or workmanship. Service must be provided by an authorized KitchenAid servicing outlet.	A. Service calls to: <ol style="list-style-type: none"> 1. Correct the installation of the washer. 2. Instruct you how to use the washer. 3. Replace house fuses or correct house wiring. 4. Correct house plumbing. B. Repairs when washer is used in other than normal home use. C. Damage resulting from accident, alteration, misuse, abuse, improper installation or installation not in accordance with local electrical or plumbing codes. D. Any labor costs during the limited warranties. E. Replacement parts or repair labor costs for units operated outside the United States. F. Pick up and delivery. This product is designed to be repaired in the home.
SECOND YEAR LIMITED WARRANTY from date of purchase.	Replacement parts to correct defects in materials or workmanship.	
SECOND THROUGH FIFTH YEAR LIMITED WARRANTY from date of purchase.	Replacement parts for the cabinet assembly should it rust through due to defects in materials or workmanship. For model KAWE950 replacement parts for the solid state controls if defective in materials or workmanship.	
SECOND THROUGH TENTH YEAR LIMITED WARRANTY from date of purchase.	Replacement parts for any part of the gearcase assembly to correct defects in materials or workmanship. Replacement of the washer outer tub should it fail to contain water due to defective materials or workmanship.	

KITCHENAID, INC. DOES NOT ASSUME ANY RESPONSIBILITY FOR INCIDENTAL OR CONSEQUENTIAL DAMAGES. Some states do not allow the exclusion or limitation of incidental or consequential damages, so this exclusion or limitation may not apply to you.

This warranty gives you specific legal rights and you may also have other rights which vary from state to state.

HOW TO ARRANGE FOR SERVICE

First call your dealer or repair service he recommends.

All service should be handled locally by the dealer from whom you purchased the unit or an authorized KitchenAid servicing outlet. If your local service is unsatisfactory, contact the Customer Relations Department, KitchenAid, Inc., P.O. Box 558, St. Joseph, Michigan 49085-0558. Call Toll Free 800-422-1230.

KitchenAid, Inc.
St. Joseph, Michigan, U.S.A. 49085